

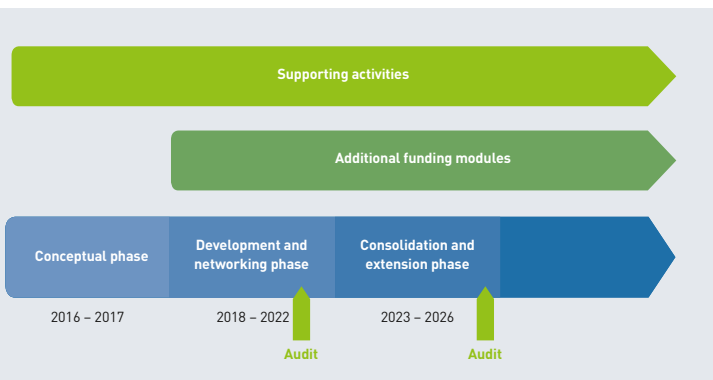
## The Medical Informatics Initiative Strengthening research and advancing healthcare

### GOALS

- The aim of the Medical Informatics Initiative (MII) is to digitally connect data from routine care across Germany and make it available for medical research.
- Medical research helps to better recognise and treat diseases and to prevent them as effectively as possible.
- The initiative additionally strengthens medical informatics in research, education and skills development.

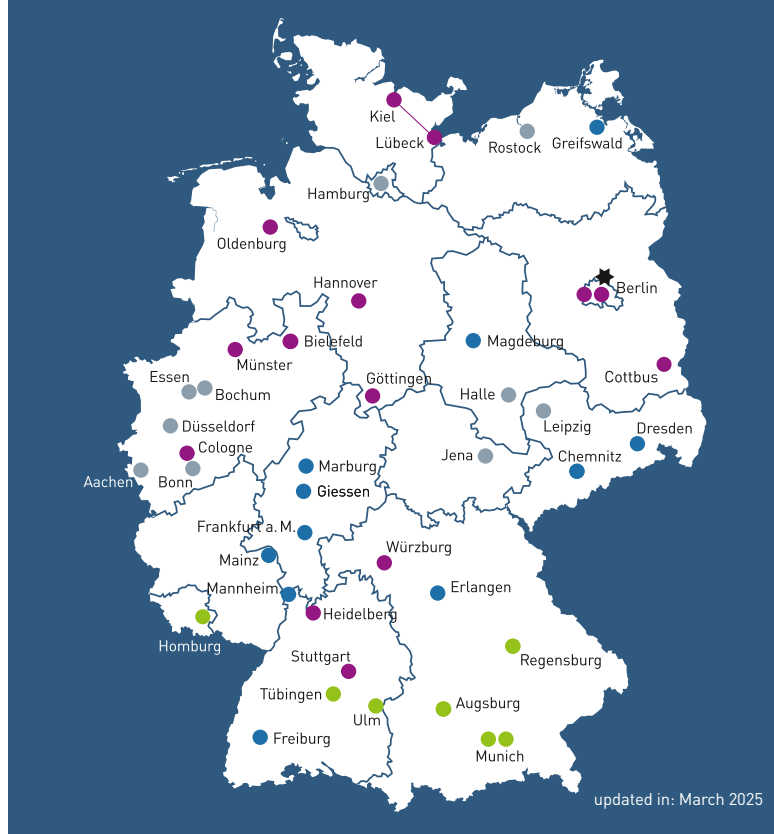
### FUNDING PHASES

The German Federal Ministry of Education and Research (BMBF) is investing a total of more than 400 million euros in the Medical Informatics Initiative through 2026. In addition, the BMBF is funding “Digital Hubs: Advances in Research and Health Care”. These integrate data from regional and outpatient care into the structures of the MII.



### CONSORTIA

Within the four funded consortia – DIFUTURE, HiGHmed, MIRACUM and SMITH – all German university hospitals and medical centres at over 30 locations cooperate with non-university clinics, research institutions, businesses, health insurers and patient representatives. Their mission is to create an environment that allows research findings to be used to the direct benefit of patients – while ensuring robust data protection and security.



## Locations of the data integration centres of the Medical Informatics Initiative



### MIRACUM

- Chemnitz:**  
● Klinikum Chemnitz
- Dresden:**  
● TU Dresden/University Hospital Dresden
- Erlangen:**  
● Friedrich Alexander University Erlangen-Nuremberg/University Hospital Erlangen
- Frankfurt am Main:**  
● Goethe University Frankfurt/Main/University Hospital Frankfurt
- Freiburg:**  
● University of Freiburg/Medical Center – University of Freiburg

- Giessen:**  
● Justus Liebig University Giessen/University Hospital Giessen/Marburg

- Greifswald:**  
● Greifswald University Hospital

- Magdeburg:**  
● Otto von Guericke University Magdeburg/University Hospital Magdeburg

- Mainz:**  
● University Medical Center of the Johannes Gutenberg University Mainz

- Mannheim:**  
● Medical Faculty Mannheim, Heidelberg University/University Medical Centre Mannheim

- Marburg:**  
● Philipps-Universität Marburg/University Hospital Giessen/Marburg

### SMITH

- Aachen:**  
● Uniklinik RWTH Aachen
- Bochum:**  
● Ruhr University Bochum
- Bonn:**  
● University Hospital Bonn
- Düsseldorf:**  
● Düsseldorf University Hospital
- Essen:**  
● Essen University Hospital
- Halle (Saale):**  
● University Hospital Halle
- Hamburg:**  
● University Medical Center Hamburg-Eppendorf
- Jena:**  
● University Hospital Jena
- Leipzig:**  
● Leipzig University Medical Center
- Rostock:**  
● University Medical Centre Rostock

### Coordination office

- Berlin:**  
★ TMF/MFT/VUD

### DIFUTURE

- Augsburg:**  
● University Hospital Augsburg (UKA)
- Munich:**  
● Hospital of the Technical University of Munich (TUM Hospital)  
● Hospital of the Ludwig-Maximilians-University (LMU) Munich
- Regensburg:**  
● University Hospital Regensburg (UKR)
- Homburg:**  
● Saarland University/Saarland University Medical Center (UKS)
- Tübingen:**  
● University Hospital Tübingen (EKUT)
- Ulm:**  
● Ulm University Medical Center (UKU)

### HiGHmed

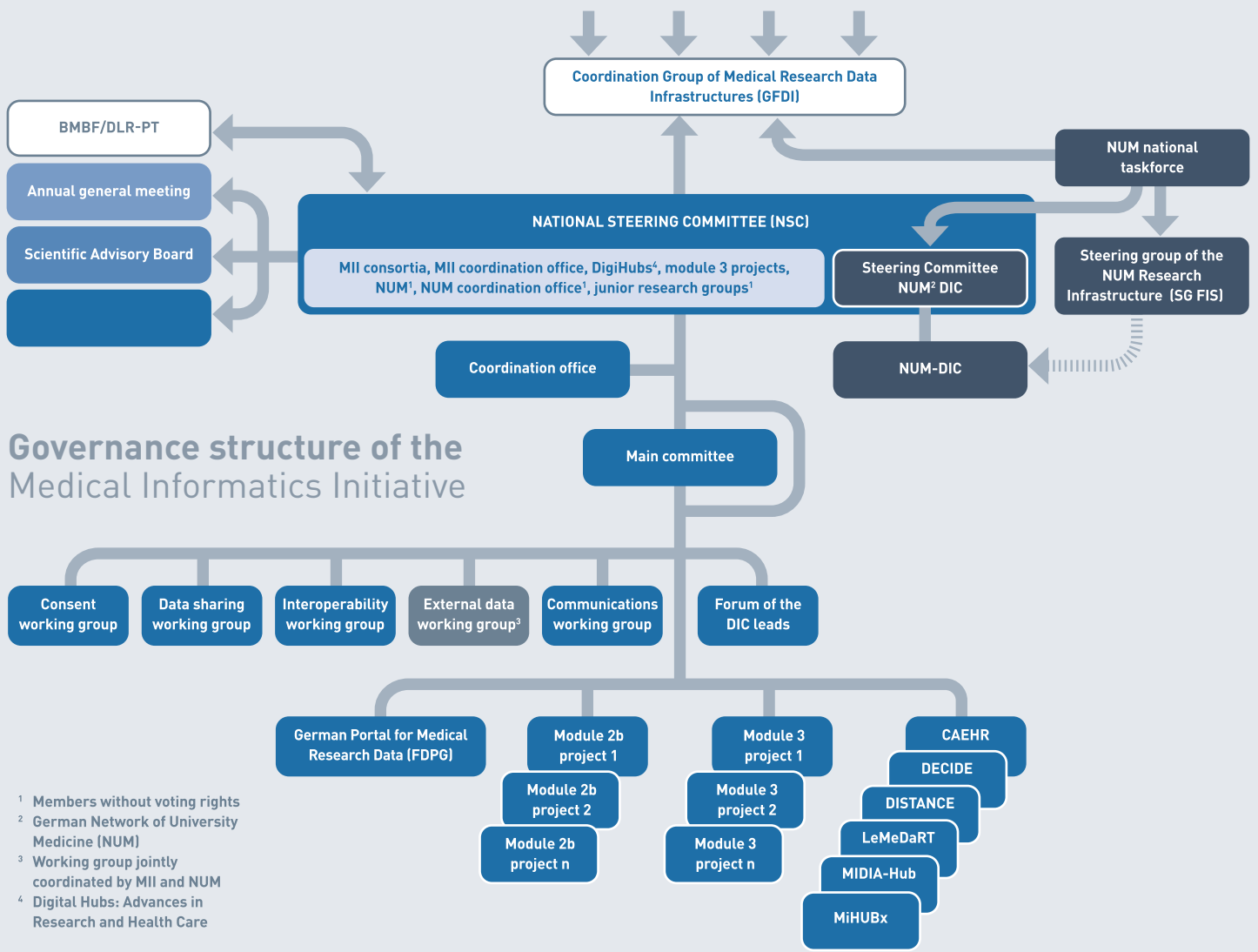
- Berlin:**  
● Charité – Universitätsmedizin Berlin  
● Vivantes Netzwerk für Gesundheit GmbH
- Bielefeld:**  
● University Hospital and Medical Faculty OWL of Bielefeld University
- Cottbus:**  
● Medical University Lausitz – Carl Thiem
- Göttingen:**  
● University Medical Center Göttingen
- Hannover:**  
● Hannover Medical School
- Heidelberg:**  
● Heidelberg University Hospital and the Medical Faculty of Heidelberg
- Kiel/Lübeck:**  
● University Medical Center Schleswig-Holstein (UKSH)
- Cologne:**  
● University Hospital Cologne (UKK)

- Münster:**  
● University of Münster

- Oldenburg:**  
● Universitätsmedizin Oldenburg

- Stuttgart:**  
● Bosch Health Campus

- Würzburg:**  
● University Hospital of Würzburg/Julius-Maximilians-Universität (JMU)



## PROJECT STRUCTURE

- The consortia meet regularly within the initiative's National Steering Committee (NSC) to coordinate activities and agree key parameters.
- The NSC is supported by consent, data sharing, interoperability, external data and communication working groups, which develop specialist resources.
- The main committee coordinates the "Module 3 projects" and the "Digital Hubs".
- An international Scientific Advisory Board and a Patient Advisory Board provide specialist expertise to help advance the initiative.
- Collaboration between and beyond consortia is the remit of a coordination office operated by TMF (Technology, Methods and Infrastructure for Networked Medical Research) with MFT (German Association of Medical Faculties) and VUD (German Association of Academic Medical Centers).

## INITIAL RESULTS

- Template text for patient consent forms (Broad Consent), developed in cooperation with German Federal and State data protection agencies and the Association of Medical Ethics Committees in Germany
- Contractual framework for the use of patient data, biosamples, analytical methods and routines and cooperation between the participating locations (user agreement and framework participation agreement)
- Data protection concept
- Use and access policy
- German Portal for Medical Research Data (FDPG): tools for feasibility enquiries, application and project management and project register
- First data use projects
- Shared core data set in line with international standards
- Specifications for harmonised metadata
- New professorships and study programmes for medical informatics



SPONSORED BY THE



Federal Ministry  
of Education  
and Research